

Having trouble reading this newsletter? Click here to see it in your browser.



Aquaculture Newsletter - May 2021 -

Scanz Technologies Ltd

118 Carbine Rd
Mt Wellington
PO Box 26 148
Auckland 1003
New Zealand

T. 64 9 520 2544
E. info@scanztech.com
W. scanztech.com

Australia Toll Free
1 800 129 876

In this newsletter: Editorial, New development around Oxygen supplementation for Harvest cages and Bathing operations., Technical drawings,

Editorial

It is some time since we have burst into print, but as you would expect we have remained active in the market. The Covid shut downs have allowed plenty of time for planning and development.

Projects involved include, packaged RAS (particularly from TMC Biosystems), Drum Filters, fish transfer, ice dosing, process factory- complete lines, and smoke houses.

Given some modest global recovery is underway we welcome new enquiries in the knowledge it will get our immediate attention in collaboration with our important overseas principals. Here is a list to jog your memories:

- Drum Filters
- Feeders and feeding systems
- Fish pumps- hatchery, grow out and harvesting
- u/v and Ozone systems
- Fish counters
- RAS projects
- Oxygenation
- Ice plants
- Freezing systems
- Process factory equipment - including complete line automation
- By-product utilisation

Then there are the other technologies: HPP - High pressure Processing, CoolSteam cooking and cooling systems.

New development around Oxygen supplementation for Harvest cages and Bathing operations.



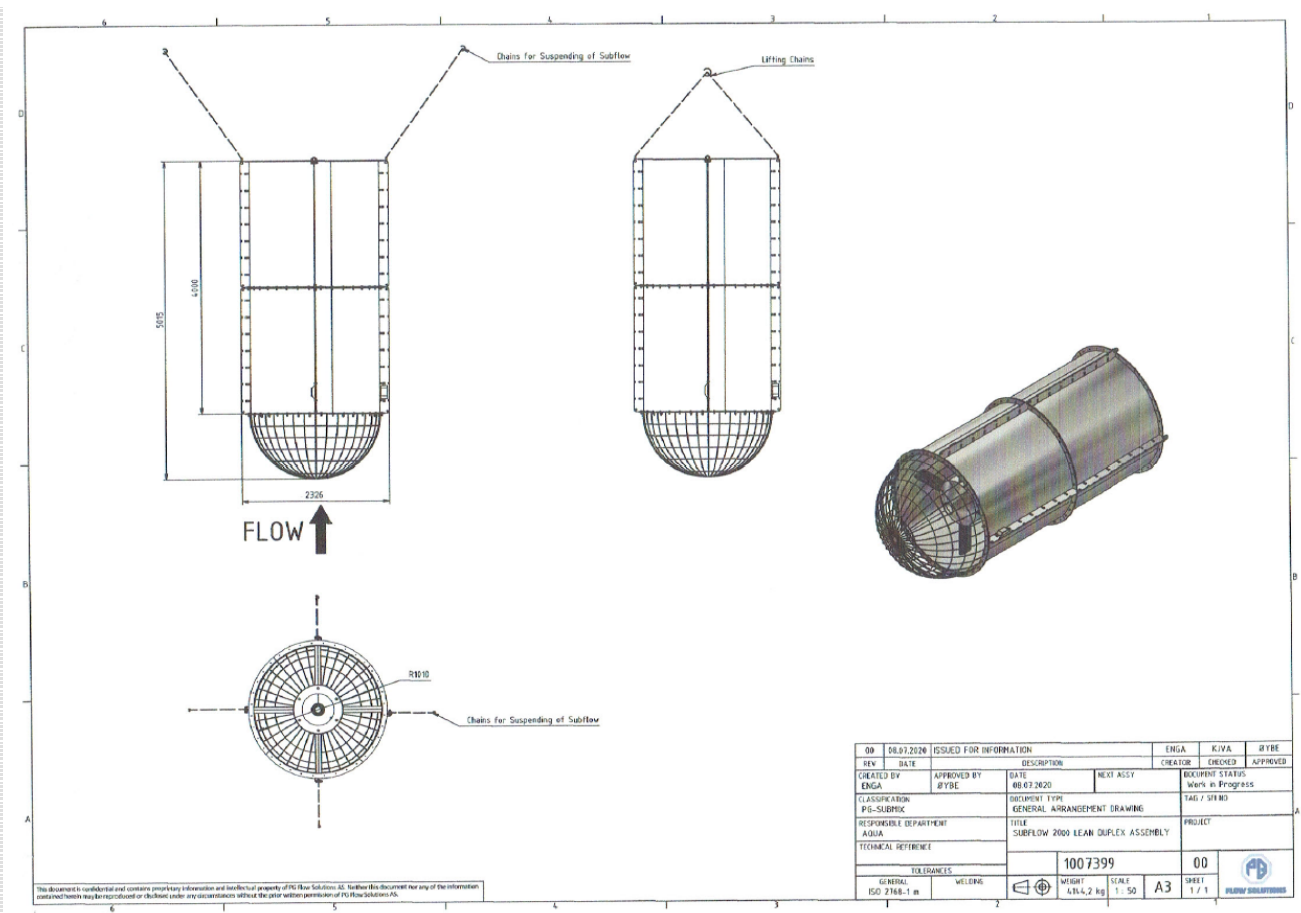
Nova Sea provides an "oxygen feast" for its farmed salmon via new seawater pump technology

Outside its packing facility in Lovund, North Norway, salmon farmer Nova Sea is increasing the oxygen content in its waiting cages by 20 percent courtesy of newly-developed pump technology.

The PG-Subflow consists of a high-capacity propeller pump with two counter-rotating propellers. The machine's propellers are fueled by a separate electric motor. Through the use of frequency converters, each propeller RPM can be optimized to the duty. All equipment making up the PG-Subflow is electronic and suitable for submergence. PG Flow Solutions developed, assembled, delivered, and installed the pump for Nova Sea.

"These are high capacity pumps capable of pumping 20,000 cubic metres of seawater per hour despite the relatively modest 21.5 kilowatt effect per pump, which contributes towards keeping operational costs as low as possible."

Technical drawings



Forward this email to a friend.

© 2021 Scanz Technologies Ltd.

This email was sent to [email address suppressed].
To be removed from future emails please [click here](#).

Powered by



Announce